

2004 -1993

=====

:

-1993

: 2004

: -

13.7

22.3

()

1993

%56.3

%28.0

(1)

13.7

1996

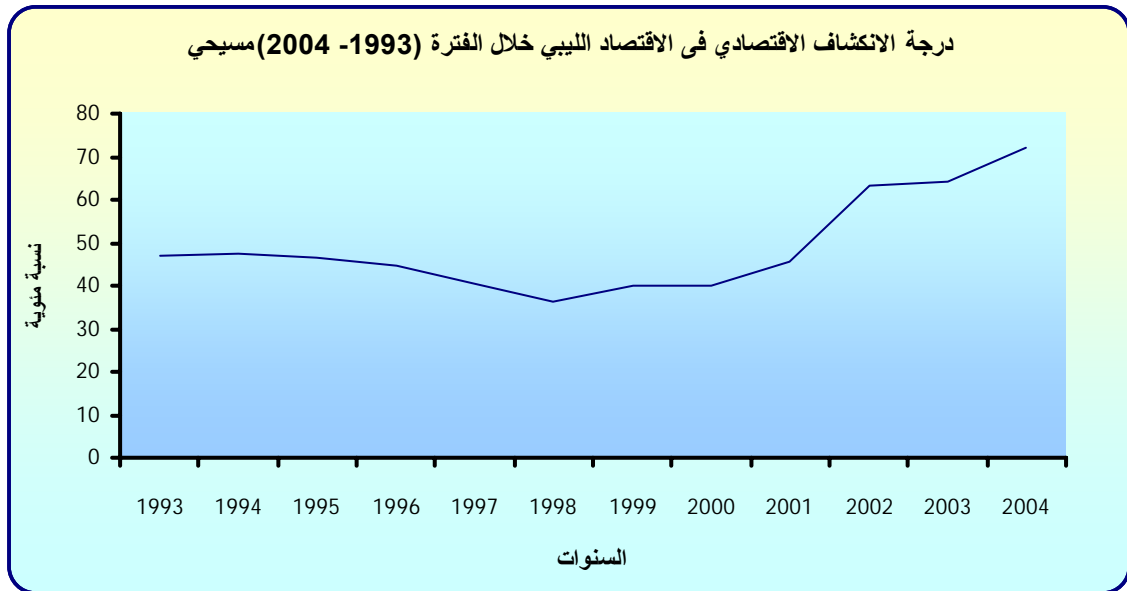
15.2

		%10.7		1993
	.		%21.9	
11.4	%22.1	%5.6		1998
	.			
	%34.6			
				1998
				. %95.0
	%15.4		2000	
	% 28.7			
1999				
1999	% 10.1	% 24.4		
% 4.1	2002	2001		2000
%10.6	% 12.2			%7.3
.	2001	%18.2		
	% 40.8	% 27.5		
				2004 2003
				2003
			2004	16.0

(1)

1998 %36.3

2004 %72.2



1997 (4)

1997 (5)

2000 (9)

2004 (6)

(21)

2001

:

-

%94.0

%6.0

%32.7

%18.8 1998 2004 %51.7

1993 8.1

1.8 %21.9 1996 9.9

1993 %54.4 %85.5

5.9 1998

2000 10.2

%12.2

2002 2001 %10.6

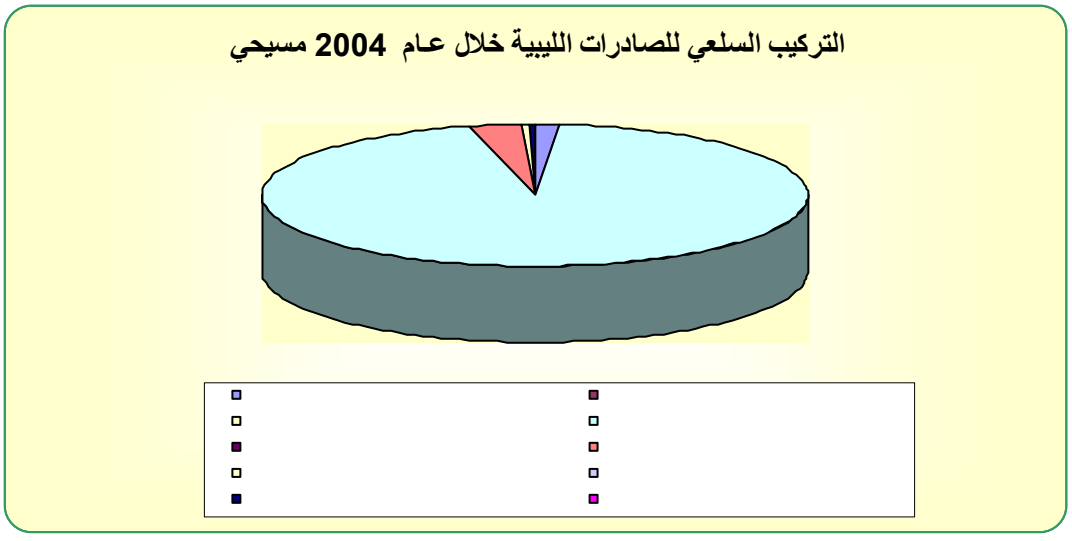
2004 2003 %39.0 %43.3

.1

:

(2)

1993 7.5 9.5 1996
 1998 5.5
 16.0 2004
 1993 % 91.9
 2002 %96.5
 % 3.1
 % 2.9



.2

:

(3)

% 82.3

%50.0

% 6.5 % 15.3 % 17.5

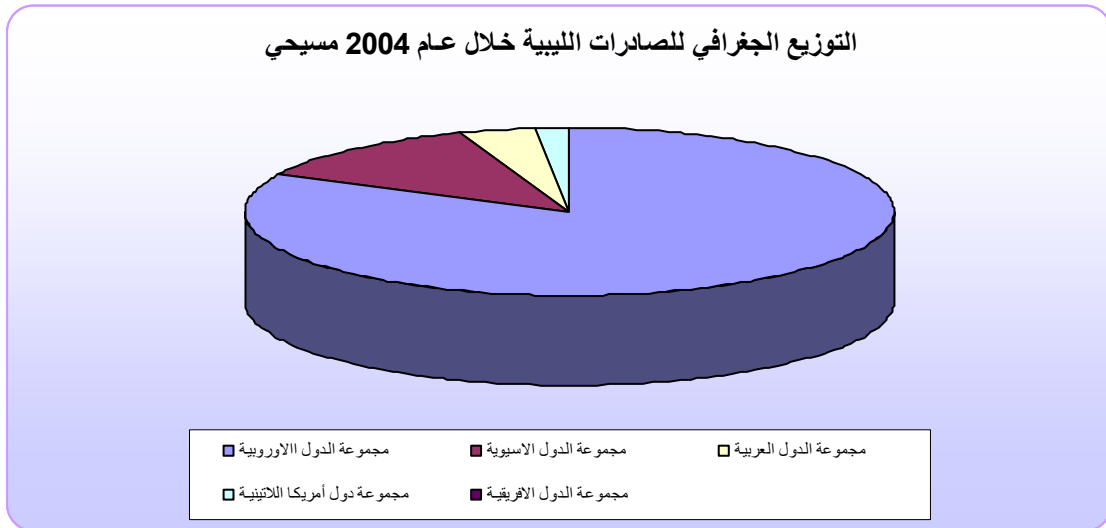
% 7.0

2003 %12.6

%6.2

%10.4 %55.3

%0.2



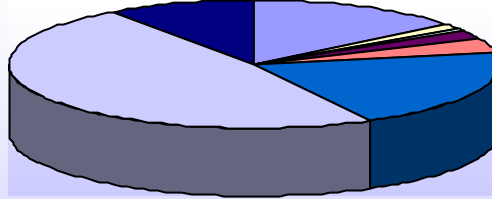
%16.6

2004-1993

%39.3
 (1)
 %16.2
 1995 % 5.9 % 6.1 % 7.6
 1997 1996
 2004 %45.6
 : -1
 % 37.5
 1993 %37.5 1999 % 38.4
 2004 % 48.0 1995 %31.7
 %20.5
 %14.5 %18.1
 % 22.6 1993
 1995

%7.9

التركيب السلعي للواردات الليبية خلال عام 2004 مسيحي



■ مواد غذائية وحيوانات حية	■ مشروبات وتبغ
■ مواد خام غير صالحة للاكل باستثناء الوقود	■ مواد الوقود المعدنية والمحروقات والمواد المتصلة بها
■ زيت وشحوم حيوانية ونباتية	■ مواد كيميوية
■ مصنوعات صنعت في الغالب على اساس المواد التي صنعت منها	■ الات ومعدات نقل
■ مصنوعات مختلفة	■ سلع غير مصنفة على اساس النوع

-2

%56.0

%53.9 1994

1996 %58.8

2001 %61.1

2000

%54.5

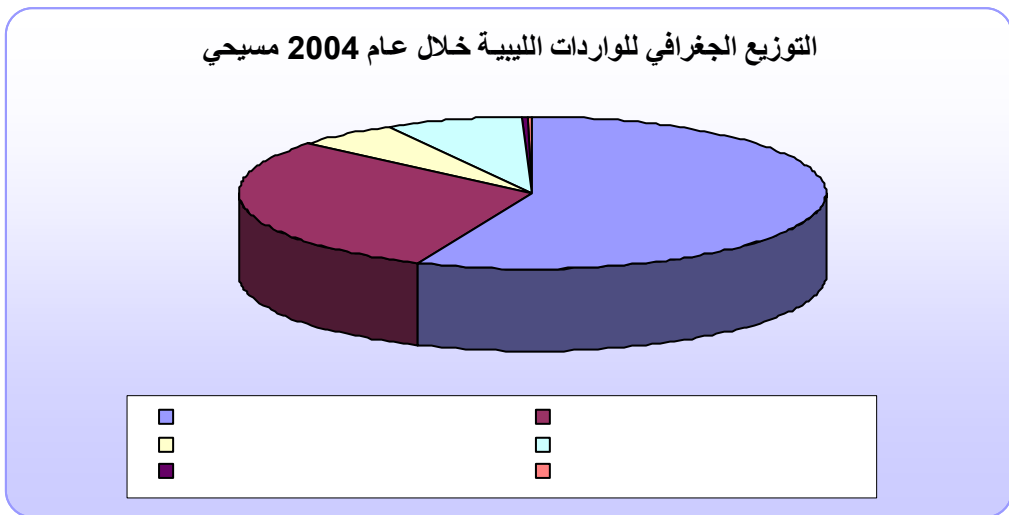
%74.0

%34.1

%12.8 %22.2

%21.5

1994 %20.7
 %15.8 2001
 . 2004 %29.7
 %9.4
 %22.4 %23.0 %35.1
 .
 2000 %11.6
 % 7.3
 %7.0



2004 - 1993

:

:

.1

100

$$100 \times \frac{\text{.....}}{\text{.....}} = \text{.....}^* (\text{.....})$$

(6)

%42.6

1999 - 1990

1993

%57.4

2002 2001 2000

%284.6 %160.1 %153.1

:

.2

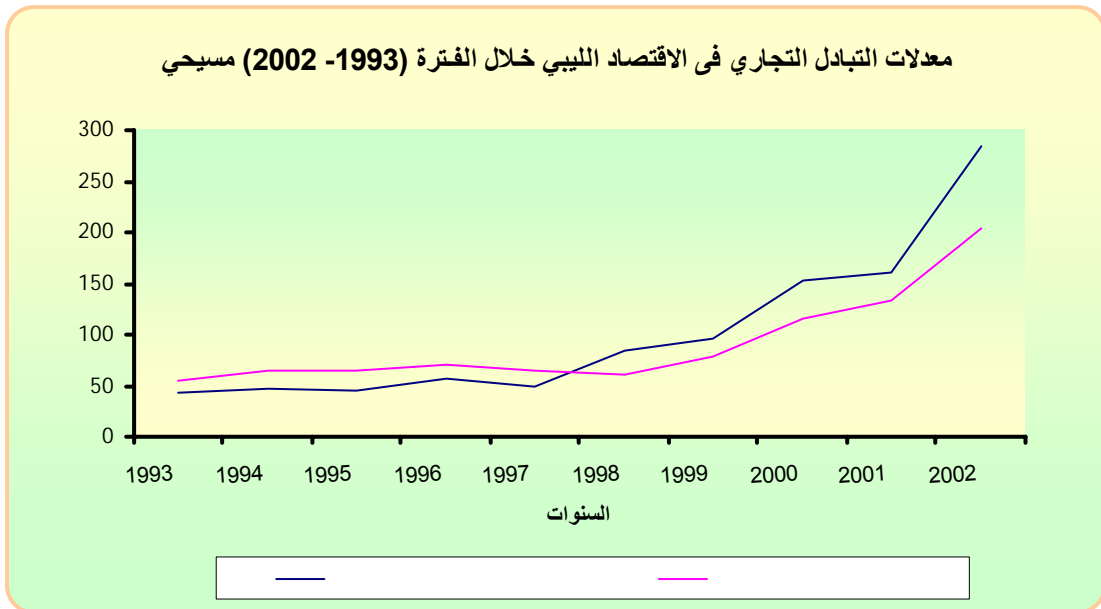
100

* مركز بحوث العلوم الاقتصادية ، بنغازي ، مجلة البحوث الاقتصادية - المجلد الثالث - العدد الثاني ، خريف 1991 ، ص 151 .

$$100 \div [100 \times \text{_____} \times] = * (. .)$$

(6)

1993	%54.8	1999 - 1990
	%45.0	
1993		
		1984 %45.6
	%49.2	1991
	2002 - 2000	
		%203.2 %133.5 %115.6
	%316.4	2002
2002		1995
	()	%28.6
	2002	40.7



* مركز بحوث العلوم الاقتصادية ، مرجع سبق ذكره .

=====

:

.1

% 5.0

.2

% 95.0

% 31.4

.3

. %49.0

.4

1997-1990

1984

2002 - 2000

1995

.5

:

.1

.

.2

.

.3

.

.4

.

.5

.

(1)

(2004 – 1993)

100 (4 / 3)	(4)	(3=2+1)	(2)	(1)	
46.9	29266.7	13725.5	5607.3	8118.2	1993
47.6	30143.1	14353.7	4637.7	9716.0	1994
46.4	30810.1	14291.9	4990.0	9301.9	1995
44.6	34083.4	15189.1	5294.2	9894.9	1996
40.5	36174.3	14663.7	5605.8	9057.9	1997
36.3	31486.4	11430.2	5502.5	5927.7	1998
39.9	30351.5	12099.0	4158.8	7940.2	1999
40.1	34782.8	13957.6	3740.2	10217.4	2000
45.6	29327.8	13387.9	4420.5	8967.4	2001
63.1	19675.5	12414.9	4399.3	8015.5	2002
64.3	24618.7	15830.6	4343.0	11487.6	2003
72.2	30874.3	22292.7	6323.3	15969.4	2004

:
:

(6)

(2002 -1990)

87.6	62.2	62.6	140.8	122.5	76.2	1990
82.2	55.1	65.5	149.2	112.0	61.7	1991
66.6	49.5	55.5	134.6	125.5	62.1	1992
54.8	42.6	43.1	128.7	127.6	54.4	1993
65.0	48.0	54.5	135.5	135.5	65.1	1994
65.3	45.5	57.2	143.6	151.1	68.7	1995
71.2	55.9	62.1	127.3	153.0	85.5	1996
65.3	48.6	70.1	134.4	155.2	75.5	1997
60.1	84.5	91.3	71.1	109.7	92.7	1998
79.0	96.9	85.9	81.5	129.3	125.3	1999
115.6	153.1	58.5	75.5	125.4	192.0	2000
133.5	160.1	101.3	83.4	123.0	196.9	2001
203.2	284.6	125.1	71.4	146.3	416.4	2002

. (2002 -1998)

1999 1998

-

:

. 1984

(1997 - 1990)

. 1995

(2002 - 1998)

. 2004 2003

=====

(203) ☐ . ☐

(2)

(2004 – 1993)

2004	2003	2002	2001	2000	1999	1998	1997	1996	1995	1994	1993	
2.5	2.3	4.8	0.67	11.9	34.1	31.2	23.9	15.2	35.2	53.0	90.8	
-	-	-	-	-	-	-	-	-	-	-	-	
1.2	0.3	0.9	3.0	3.1	15.1	11.2	7.3	8.0	29.2	10.6	55.7	
15385.1	10898.5	7737.5	8549.0	9768.7	7523.4	5489.8	8585.1	9492.6	8562.6	9040.3	7460.6	
-	-	-	-	-	-	-	-	-	-	-	0.7	
517.7	478.5	164.2	289.6	373.0	211.8	249.7	295.2	253.3	389.2	237.8	199.5	
56.1	108.0	106.0	123.2	59.9	153.0	136.3	142.8	121.4	243.9	320.4	257.2	
6.8	-	-	-	-	1.3	7.2	3.4	0.3	13.0	12.8	17.0	
-	-	0.1	2.0	0.8	1.5	2.3	0.2	4.1	28.8	41.1	36.7	
-	-	2.0	-	-	-	-	-	-	-	-	-	
15969.4	11487.6	8015.5	8967.4	10217.4	7940.2	5927.7	9057.9	9894.9	9301.9	9716.0	8118.2	

(3)

(2004 – 1993)

2004	2003	2002	2001	2000	1999	1998	1997	1996	1995	1994	1993	
13122.2	9444.8	6740.1	7518.3	8821.1	6812.1	5011.7	7728.2	8744.2	7966.2	8498.6	7293.5	:
12935.3	9272.2	6617.0	7254.3	8719.5	6616.6	4853.3	7034.9	8059.1	7721.1	8232.8	6914.4	.1
6271.7	4552.7	3289.3	3734.7	4353.5	3000.4	2368.5	3278.1	4269.0	3909.5	4143.0	3616.4	
2922.4	1686.8	1068.6	1265.8	1559.6	1513.8	969.5	1357.5	1612.45	1255.8	1195.3	696.9	
333.5	295.7	296.8	325.4	575.7	511.9	229.0	412.6	383.4	569.3	734.0	658.3	
2131.5	1690.5	1369.7	1388.7	1557.8	1089.4	663.2	828.3	911.3	1219.4	1179.1	847.1	
268.4	277.6	222.6	157.1	233.6	104.8	152.8	202.6	251.9	152.1	209.5	203.8	
117.8	102.6	87.4	110.7	70.2	82.4	136.3	77.6	72.7	65.0	167.7	224.8	
33.2	23.2	32.4	16.5	12.9	9.9	16.2	11.8	41.5	5.5	108.5	241.5	
331.6	253.5	190.8	204.5	271.4	187.0	156.3	257.7	261.3	218.0	302.7	275.2	
385.4	387.0	57.0	48.4	50.7	20.4	28.5	127.7	87.1	151.9	141.2	134.7	
139.8	-	-	-	19.0	87.3	121.0	467.6	161.2	163.7	31.8	-	
-	2.6	2.4	2.5	15.1	9.3	12.0	13.4	7.2	10.9	20.0	15.7	
186.9	172.6	123.1	264.0	101.6	195.5	158.4	693.3	685.1	245.1	265.8	379.1	.2
1977.1	1451.7	728.6	803.9	826.0	548.7	416.0	664.4	631.7	661.0	494.0	319.0	:
1322.2	887.6	466.1	554.4	771.0	451.1	381.3	510.3	432.1	390.3	373.7	144.5	
372.6	342.6	207.1	192.3	28.8	15.7	0.2	33.0	61.9	98.2	29.3	46.5	
274.3	94.0	-	45.9	-	40.3	-	40.1	44.0	70.7	5.3	64.9	
8.0	127.5	55.4	11.3	26.2	41.6	34.5	81.0	93.7	101.8	85.7	63.1	
619.8	520.9	499.3	593.2	548.1	468.6	437.4	604.1	480.4	577.4	618.4	477.1	:
426.9	357.2	361.2	455.9	424.0	321.9	293.4	385.8	209.3	233.0	163.6	118.3	
33.1	49.3	71.6	51.5	41.9	27.1	23.0	39.3	132.4	21.6	127.5	20.3	
85.5	79.1	39.0	65.5	57.3	94.4	94.4	84.9	82.1	194.3	180.2	148.8	
74.3	35.3	27.5	20.3	24.9	25.2	26.6	94.1	56.6	128.5	147.1	189.7	
235.0	58.6	18.3	28.8	22.2	23.7	33.4	51.0	26.4	78.8	96.6	14.8	:
15.3	11.6	29.2	23.2	-	87.1	28.7	10.2	12.2	18.5	8.4	13.8	:

(4)

(2004 – 1993)

2004	2003	2002	2001	2000	1999	1998	1997	1996	1995	1994	1993	
888.4	581.1	661.5	758.1	752.8	611.1	1194.7	1121.9	941.7	1125.6	788.0	811.0	
11.6	6.7	17.2	15.3	12.1	42.5	117.1	41.4	18.0	10.4	18.1	22.0	
90.5	59.9	94.0	95.8	95.5	99.4	110.9	74.4	93.2	130.2	67.9	96.7	
43.2	29.6	56.4	4.6	9.4	19.8	13.7	13.4	21.3	40.7	38.3	33.4	
119.9	136.5	41.7	83.8	139.3	124.4	160.5	100.7	98.2	122.1	108.2	69.8	
256.1	228.2	372.0	285.8	267.3	334.0	405.0	418.9	402.6	403.0	381.2	533.8	
1261.3	907.5	869.6	704.1	605.8	904.0	1138.8	1129.0	1197.2	1074.5	1139.9	1228.7	
3033.5	2083.6	1891.6	1872.7	1534.5	1596.6	1829.9	2017.0	1897.5	1583.2	1648.5	2100.3	
618.8	309.9	393.6	600.3	323.5	427.0	519.3	660.0	598.3	480.1	424.8	707.4	
-	-	1.7	-	-	-	12.6	29.1	26.2	20.2	22.8	4.2	
6323.3	4343.0	4399.3	4420.5	3740.2	4158.8	5502.5	5605.8	5294.2	4990.0	4637.7	5607.3	


(5)

(2004 – 1993)

2004	2003	2002	2001	2000	1999	1998	1997	1996	1995	1994	1993	
3561.4	3012.2	2722.7	2943.9	2254.7	2608.4	3473.0	3463.6	3402.6	3191.9	3096.9	3764.1	:
3353.1	2374.5	2445.5	2702.6	2038.6	2307.2	3149.4	3102.8	3113.3	2846.7	2499.8	3118.5	.1
1157.8	930.2	1071.2	1076.0	714.8	759.3	1189.5	884.1	937.6	788.7	789.2	1058.0	
761.5	488.5	493.4	577.2	441.5	601.8	596.7	719.5	698.1	625.0	551.7	712.7	
255.6	275.6	194.1	194.2	204.5	228.6	305.1	346.3	258.8	271.1	250.3	239.2	
118.4	101.9	61.4	261.0	68.7	68.4	97.9	101.4	154.3	139.1	67.3	121.9	
72.1	70.2	79.5	113.4	87.3	82.2	91.4	142.1	154.6	195.7	134.3	171.7	
92.8	64.7	84.1	80.1	121.9	116.4	257.7	148.6	129.9	123.6	126.5	76.7	
260.4	302.2	309.3	249.9	216.4	267.2	420.5	437.5	408.9	384.2	368.4	468.6	
68.4	22.7	40.4	62.5	48.7	63.0	41.4	94.1	94.8	93.2	36.2	53.1	
139.8	18.0	37.6	43.1	79.4	46.8	56.2	51.4	141.6	70.2	70.4	77.0	
426.3	100.5	74.5	45.2	55.4	73.5	93.0	177.8	134.7	155.9	105.5	139.6	
208.3	637.7	277.2	241.3	216.1	301.2	323.6	360.8	289.3	345.2	597.1	645.6	.2
1875.8	691.5	879.0	697.2	735.0	862.7	937.9	1141.2	1050.7	1033.7	919.2	1041.3	:
471.7	97.1	227.3	297.1	308.6	323.2	288.1	169.1	335.4	223.4	212.3	171.1	
501.0	323.4	285.2	155.9	173.4	204.2	229.0	456.4	196.6	197.5	194.8	243.1	
552.1	85.6	77.0	61.5	69.7	86.9	76.4	87.0	164.0	132.8	124.1	142.9	
111.4	92.6	63.7	57.7	36.2	27.2	76.4	164.6	211.5	307.2	206.3	266.7	
239.6	92.8	225.8	125.0	147.1	221.2	268.0	264.1	143.2	172.8	181.7	217.5	
384.5	453.3	428.6	450.8	433.9	430.6	492.5	564.0	444.1	437.1	391.0	530.8	:
145.7	136.5	212.6	211.3	190.3	142.3	174.5	221.0	131.6	95.3	96.6	142.5	
131.7	130.3	86.3	71.0	68.9	69.4	121.1	129.2	103.7	127.3	110.3	179.9	
31.6	28.9	57.4	45.0	67.1	116.4	96.1	117.2	112.0	136.8	131.8	143.8	
23.8	99.5	26.9	45.9	31.1	27.2	21.2	18.3	11.3	14.4	5.3	2.0	
16.5	13.4	15.4	28.4	21.1	19.4	19.0	10.7	17.7	12.7	4.1	8.2	
35.2	44.7	30.0	49.2	55.4	55.9	60.6	67.6	67.8	50.6	42.9	54.4	

(5)

2004	2003	2002	2001	2000	1999	1998	1997	1996	1995	1994	1993	
473.5	150.9	318.1	256.5	270.8	205.9	368.1	334.5	364.5	271.7	156.4	250.0	:
157.1	20.3	129.6	124.7	76.9	84.3	79.9	78.9	97.0	91.5	72.9	97.3	
114.5	37.4	46.5	28.4	34.4	54.8	117.4	150.7	119.4	75.1	33.7	53.7	
81.3	51.0	34.6	35.4	44.2	31.3	62.7	55.6	83.3	56.0	18.7	37.0	
99.7	25.8	64.0	66.8	103.1	21.1	92.4	32.5	25.2	18.2	16.5	35.4	
20.9	16.4	43.4	1.2	12.2	14.4	15.7	16.8	39.6	30.9	14.6	26.6	
13.0	16.6	35.2	36.2	22.0	35.3	210.7	97.0	24.6	24.5	67.4	18.4	:
9.9	15.6	34.3	35.2	20.4	27.8	207.7	89.1	20.5	22.5	65.5	15.1	
3.1	1.0	0.9	1.0	1.6	7.5	3.0	7.9	4.1	2.0	1.9	3.3	
15.1	18.5	15.7	35.9	23.8	15.9	20.3	5.5	7.7	31.1	6.8	2.7	:

(203.1)  . 